

An aerial photograph of a large-scale construction project in an urban setting. Several high-rise buildings are under construction, heavily encased in green and blue scaffolding. The surrounding area includes other completed buildings, construction materials, and a road with some trees. A large, semi-transparent handprint graphic is centered over the image, with a color gradient from pink at the top to orange at the bottom. The text 'CAPABILITY STATEMENT' is overlaid in white, bold, sans-serif font.

CAPABILITY STATEMENT

yagacorporation.com.au

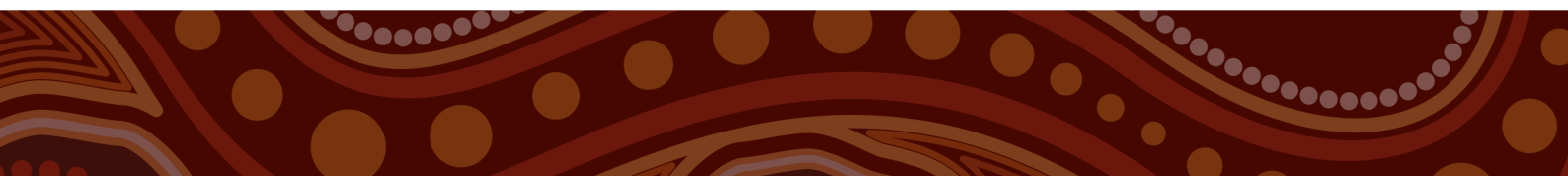


ABOUT YAGA

Yaga Corporation, founded in 2021 by Paul Fleming, is an Indigenous owned Construction and Infrastructure services provider, specialising in Height Access and Waste Management solutions. We work in partnership with Building and Construction companies to tailor a scope of work and package detailed for the Builder, and local communities, we collaborate with.

We aim to build careers and create opportunities, for Indigenous Australians, and establish a strong presence in the Construction Industry. By collaborating with us, your organisation will be actively involved in supporting communities, growing careers, and in Indigenous participation across Australia.

Together, we can make a difference. We work to ISO certified policies and procedures to ensure the best service and outcome for all stakeholders. Yaga Corporation is Supply Nation Registered business.



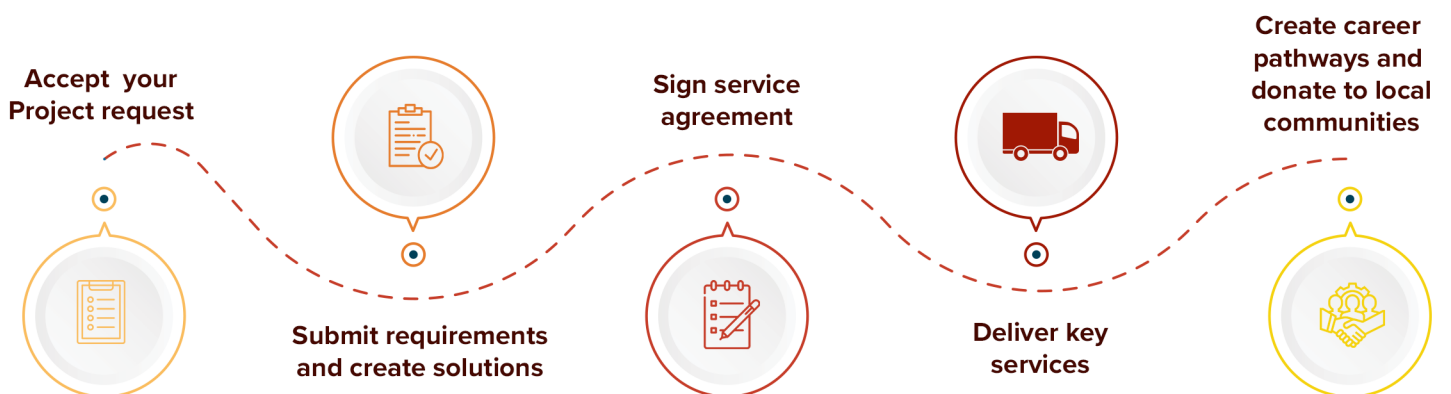
OUR VALUES



OUR ETHICS



OUR METHODOLOGY



OUR SERVICES



We offer services across each and every category listed below.

These services include **Scaffolding hire and access services, Waste Management, Labour Hire, Safety Nets and Edge Protection Services, Propping and Shoring.**

Yaga ensures to deliver the highest standard of construction and building services, with strict and safe procedures that enable us to complete projects efficiently.

A side from our mentorship and education programs, community work and indigenous career participation, we have established an easy step-by-step process to ensure clear communication, quality outcomes and client satisfaction.



RESIDENTIAL



COMMERCIAL



INDUSTRIAL



RAILWAY



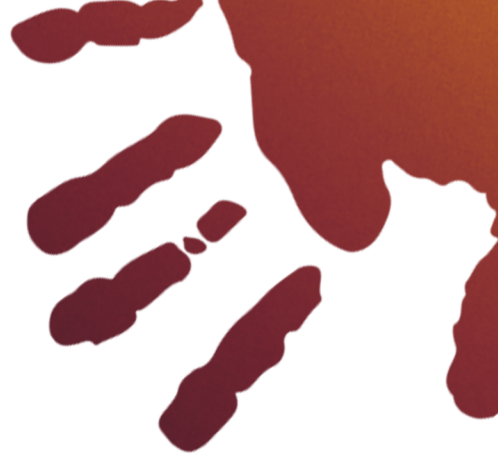
GOVERNMENT



BUSINESS MODEL



OUR COMMUNITY MODEL



COMMUNITY

Meet and engage with local communities to actively recruit indigenous staff.

TRAINING

Covering the cost of courses to enhance skills and quality staff.

LABOUR

Provide work experiences and develop employee confidence.

MENTORSHIP

Support, mentor and create future leaders.

CAREER DEVELOPMENT

Upskill new starters to a higher level and progress them to team leaders and managers.

OUR CLIENTS



MULTIPLEX



WASTE MANAGEMENT

**Partenered
with
Purple Cow**

Yaga delivers waste management services across Sydney. With a focus on paving career pathways for Indigenous Australians to excel within the construction industry, we can assure our clients of the highest standard of skip and hook bin service delivery .



PERIMETER SCREENS

& Edge protection

Offers innovative perimeter safety screen solutions and edge protection to suit your project needs. Our services include design and engineering, delivery, and supply to suit your specific project requirements and budget.



WHAT ARE PERIMETER SCREENS?

Perimeter Safety Screens are a lightweight, self-climbing, hydraulically lifted system designed to achieve the enclosure of the above ground level work floors to full height. With integrated working platforms, they effectively seal off the inner areas allowing you to carry out construction work in high rise projects. This provides great safety whilst protecting workers from falls and wind.

Due to the safety screens being structure guided at all times, it can be operated in windy conditions as well as having the option to also be quickly repositioned by crane if sufficient craneage is available.

Our screens can provide working platforms around the extremity of the suspended slab, ensuring a safe work zone for all workers. Our screens are designed to eliminate falls and risk including dropped objects, by wrapping the building in a steel mesh cage that can be steadily raised as the structure climbs upward.

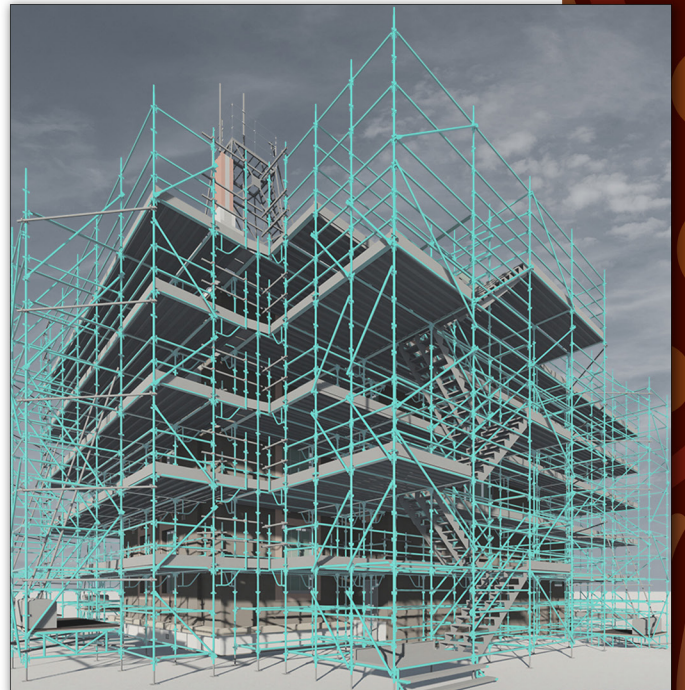
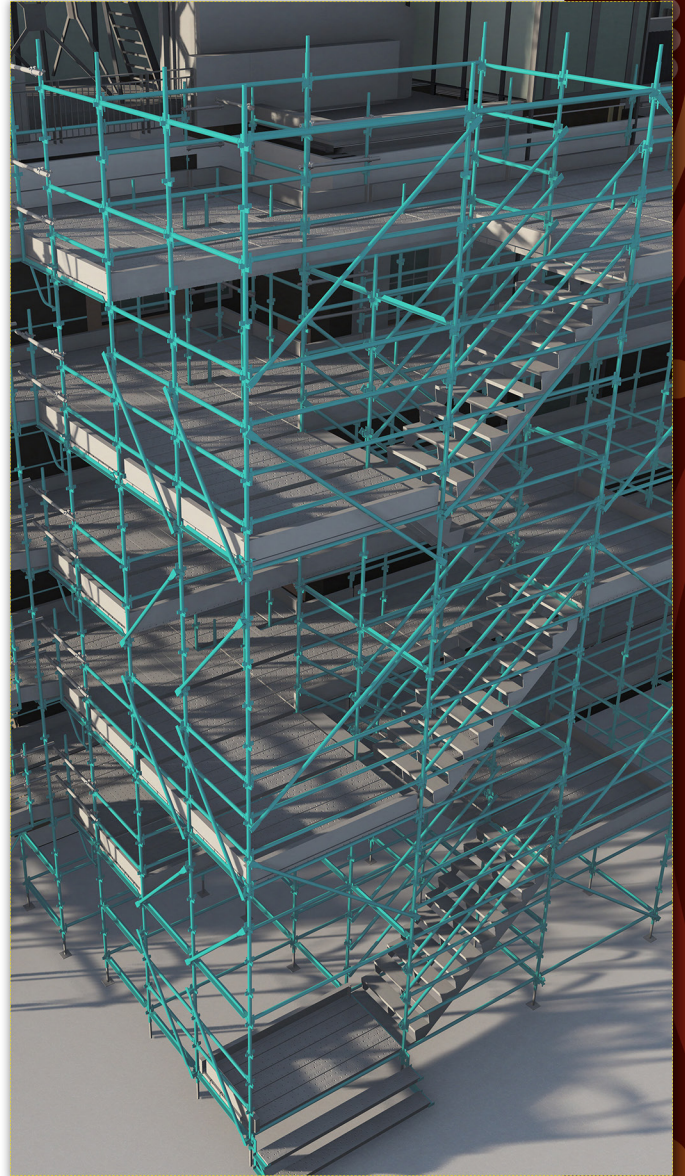
OVERVIEW

- | | |
|---|---|
| ➤ Minimum on-site assembly prior to initial erection | ➤ Lightweight system – no propping or heavy loadings required |
| ➤ Less labour and material required on site. | ➤ Flexible design that accommodates for personnel formwork hoists, loading platforms, etc |
| ➤ Finishing works for facades can be installed using screens; | ➤ Platforms designed and customised to suit building profile |
| ➤ Valuable ground storage space is available for access | ➤ Eliminate falls and risk, allowing workers to carry out construction in high rise projects. |

3D RENDERS

FORT STREET PUBLIC SCHOOL

ENGINEERING



PROJECT

METRO STATION, BARANGAROO



BESIX WATPAC

Sydney Metro is Australia's biggest public transport project and Yaga Corporation are delighted to provide scaffold services to the new metro station at Barangaroo. Our team built 150m of watertight scaffold bridges to allow people, plant and equipment to safely access the station site in all weathers. Part of the bridge used 20m cantilevered scaffolding to allow enough clearance for civil works to take place underneath. The bridges were built off site to minimise site installation time and avoid working at heights.

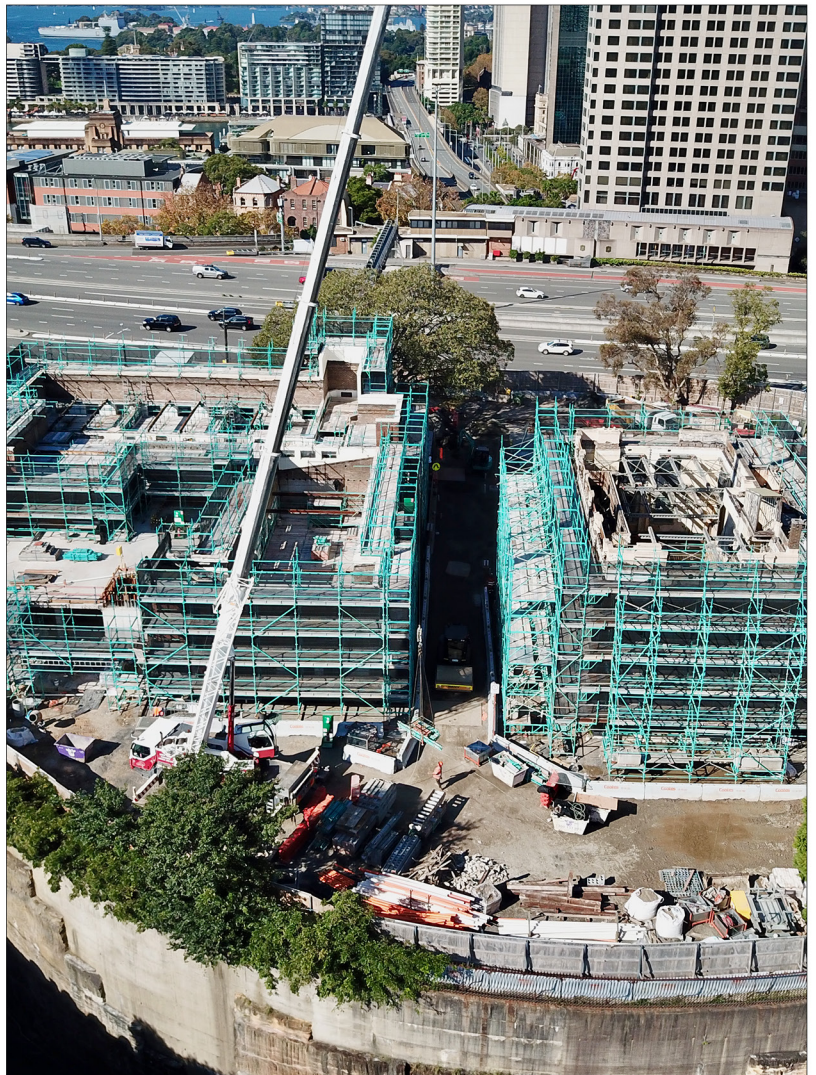


PROJECT

FORT STREET PUBLIC SCHOOL

LENDLEASE

Scaffolding solutions for Lendlease Fort Street Public School for MET building. We provided safe access and working platforms to this heritage listed building. Due to the buildings' structural integrity the team at Yaga have engineered a free-standing counter weighted scaffolding to avoid additional loads to the existing fragile building all while maintaining un-interrupted access around the building.



PROJECT

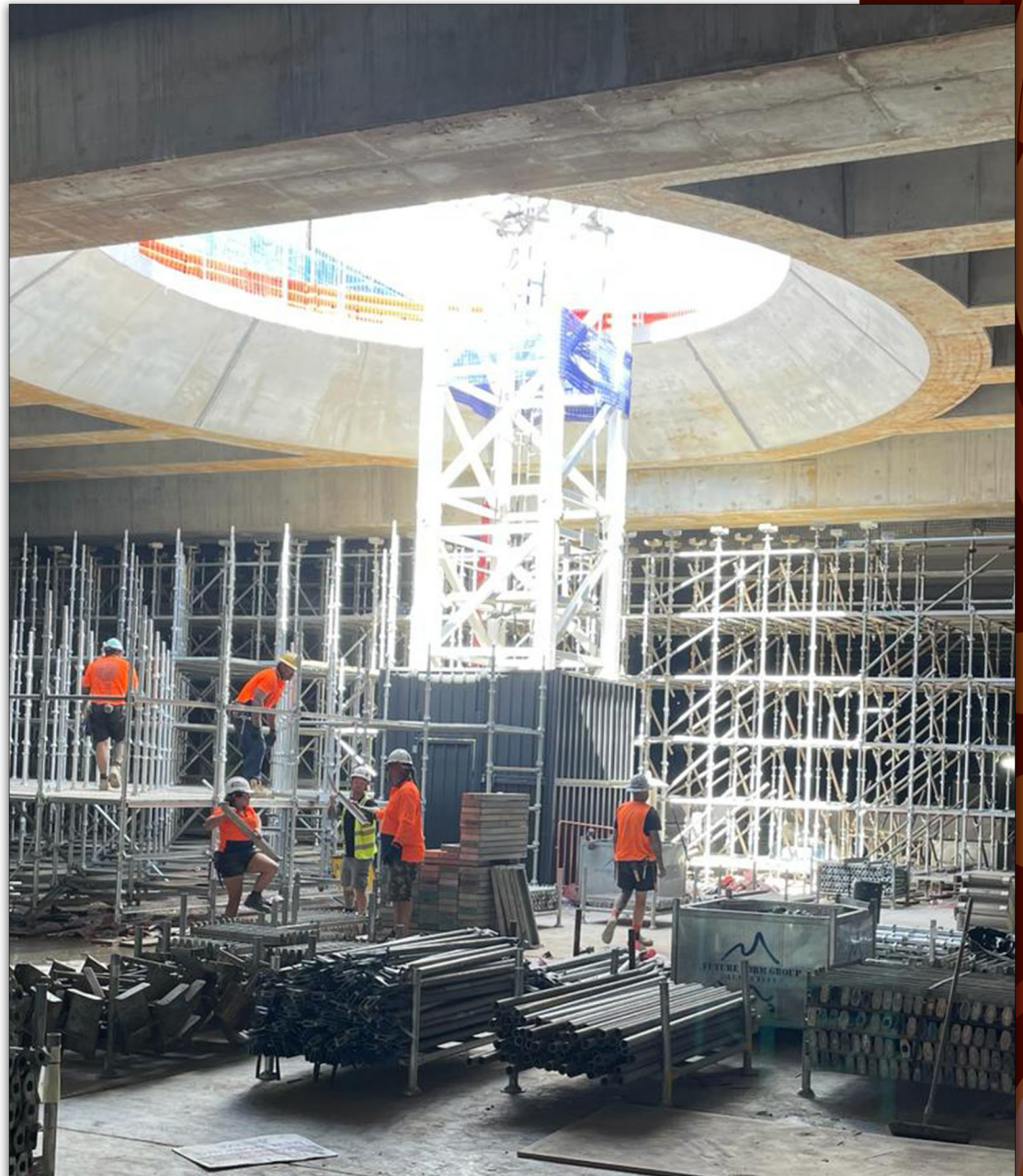
WAR MEMORIAL



LENDLEASE

We take great pride in our involvement with Lendlease on the monumental Australian War Memorial Development project- Anzac Hall and Glazed Link, situated in Campbell, ACT.

This endeavour marks a significant achievement for Yaga Corporation, an Indigenous-owned company distinguished by its commitment to culture, integrity, and unwavering dedication.





PROJECT



CASTLE HILL PUBLIC SCHOOL

ADCO CONSTRUCTIONS

Yaga are happy to be supplying another successful Education project in Partnership with ADCO, as we have worked closely to supply the perimeter scaffold on a handful of previous education projects with ADCO. We are supplying over 3500m² of perimeter edge protection a long with internal birdcages and stretcher access to the project. Building a future for our next generation of youth.



CANBERRA HOSPITAL

MULTIPLEX

The Canberra Hospital Expansion project began construction in 2020-21. The project will establish a new Critical Services Building at the existing hospital campus in Woden. Construction of the new building is expected to be completed in 2024.

The nearly 40,000 sqm new facility is the largest healthcare infrastructure commitment ever undertaken by the ACT Government.



P
R
O
J
E
C
T



PROJECT

HUNTER STREET,
SYDNEY

MANN GROUP NSW

The largest demolition project
currently in Sydney, Hunter St.



YAGA CORPORATION
ABN 86 649 416 491

1300 724 861
info@yagacorp.com.au

409 King Georges Rd,
Beverly Hills, NSW, 2209

yagacorporation.com.au

